

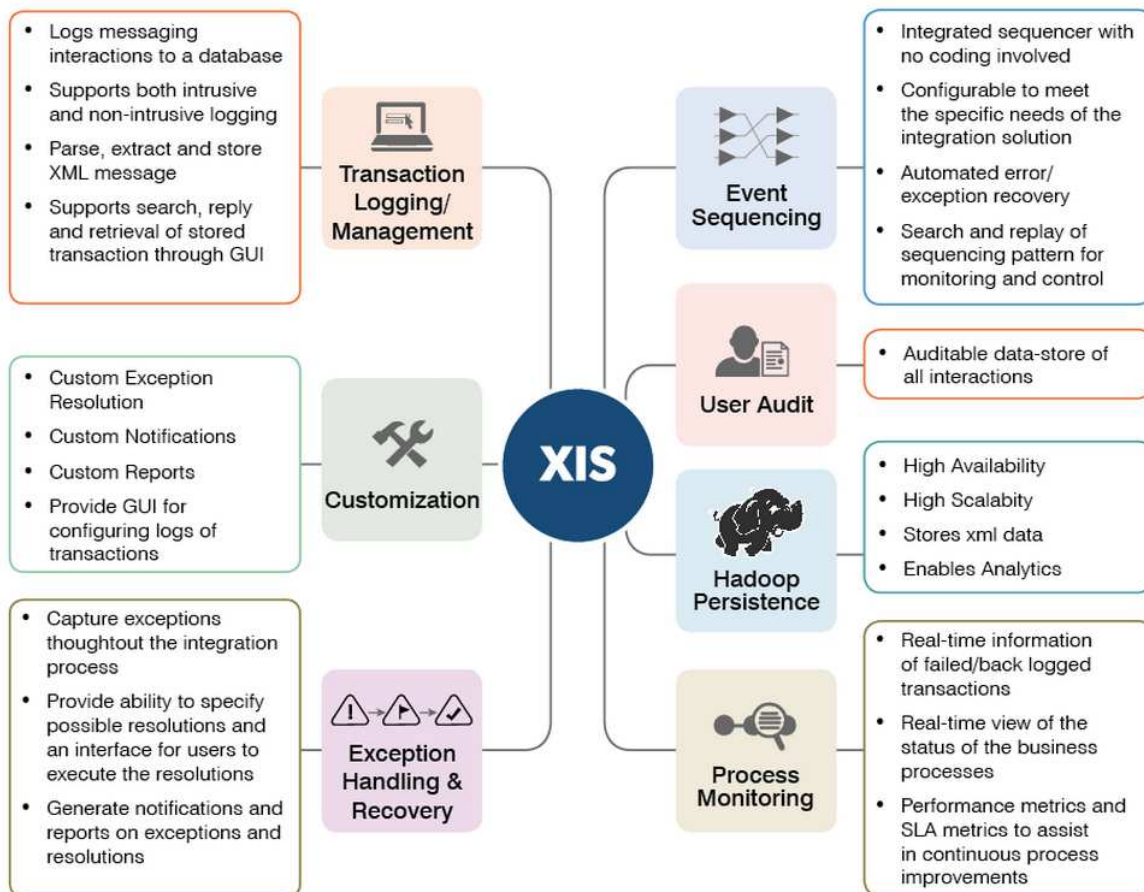
# XTIVIA INTEGRATION SERVICES

## OVERVIEW

XTIVIA Integration Services (XIS) is a suite of common services used on any integration project. This product suite is an implementation accelerator, saving weeks or months of effort on the coding of the common services, by providing out-of-the-box, easy to deploy and configurable services for almost any integration platform.

Designed and built on a stable Service Oriented Architecture (SOA) base, XIS is intended for deployment on any JMS compliant integration platform across your enterprise. The latest version of XIS includes an upgrade to Hadoop as the database backend. XIS uses Hadoop to provide persistence to Enterprise Service Bus. We also developed our own MapReduce programs to optimally search and retrieve the transactions stored in Hadoop.

## KEY FEATURES

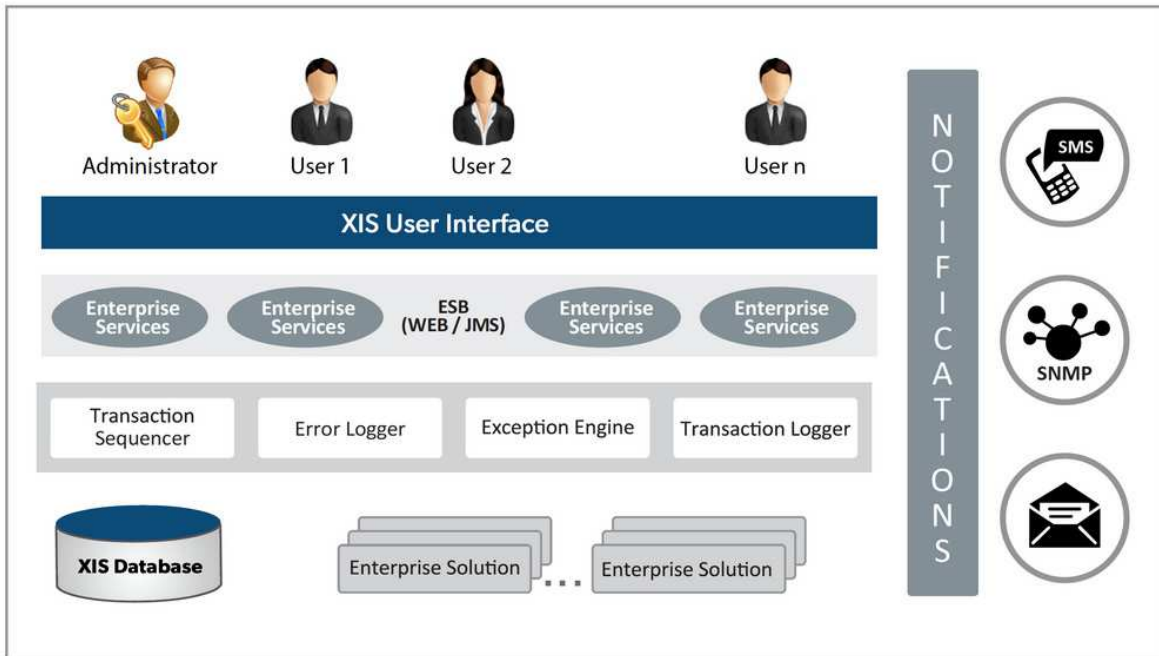


## BENEFITS

- Any application in the enterprise can invoke and utilize XIS Services
- Supports JMS and XML based Solutions
- Adobe FLEX UI
- Custom Exception Resolution
- Custom Reports
- Each Service supports horizontal and vertical load balancing
- Cost effective
- Standards based Application Solution
- Ajax and Struts Framework
- Extensible Framework
- Custom Notifications
- Flexible Implementation Architecture
- Enables multiple installations and domain / project partitioning
- Persist large volumes of data

# XTIVIA INTEGRATION SERVICES

## ARCHITECTURE



## SUCCESS STORIES

<p><b>CLIENT PROFILE</b></p> <p>A LEADING PROVIDER OF WORKERS COMPENSATION INSURANCE IN THE STATE OF TEXAS</p> <p><b>SOLUTION PROVIDED</b></p> <p>XTIVIA WAS ENGAGED TO DESIGN, DEVELOP AND IMPLEMENT THE ENTERPRISE WIDE PROCESS AUTOMATION SOLUTION.</p> <p>XTIVIA LEVERAGED BEST PRACTICES FROM SOA, BPM, BI, AND UTILIZED XTIVIA WORKFLOW FRAMEWORK (XWF) A FRAMEWORK FOR AUTOMATING BUSINESS PROCESS AND WORKFLOWS AND FOR IMPLEMENTING USER-FRIENDLY INTERFACES FOR EXECUTING AND MANAGING THE PROCESSES.</p>	<p><b>BENEFITS</b></p> <ul style="list-style-type: none"> <li>• OVER \$2 MILLION COST SAVINGS PER YEAR</li> <li>• ELECTRONIC PAPERLESS UNDERWRITING</li> <li>• CONSISTENT UNDERWRITING RESULTS FOR QUOTE REQUESTS</li> <li>• REDUCED RISKS THROUGH ELIMINATION OF ERRORS</li> </ul> <p><b>TECHNOLOGIES USED</b></p> <ul style="list-style-type: none"> <li>• XTIVIA WORKFLOW FRAMEWORK (XWF)</li> <li>• XTIVIA INTEGRATION SERVICES (XIS)</li> <li>• JSP</li> <li>• JMS</li> <li>• WEB SERVICES</li> <li>• MICRO STRATEGY BI</li> </ul>
---	---

## XTIVIA OVERVIEW

Since 1992, XTIVIA has established a proven, global reputation as a company delivering cutting-edge professional solutions to our clients' specific requirements, regardless of the complexity of the projects. XTIVIA's success has stemmed from a proven ability to deliver quality professional services, allowing the client to leverage technology successfully, competitively, and profitably. XTIVIA has received additional awards this year from Liferay, CIO Review and Inc. 5000. XTIVIA has offices in Colorado, New York, New Jersey, Missouri and Texas.